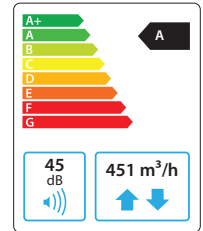


Domekt R 400 F C6M

Maximal air flow, m ³ /h	451
Maximal air flow, l/s	125
Unit weight, kg	65
Supply voltage, V	1~230
Maximal operating current, A	HE 7,3
Thermal efficiency of heat recovery, %	82
Reference flow rate, m ³ /s	0,088
Reference pressure difference, Pa	50
SPI, W/(m ³ /h)	0,25
Filters dimensions BxHxL, mm	346x258x46
Electric power input of the fan drive at reference flow rate, W	40
Electric power input of the fan drive at maximum flow rate, W	99
Electric air heater capacity, kW / Δt, °C	1 / 9,3
Maintenance space, mm	300
Control system	C6M



Acoustic data

A-weighted sound power level L_{WA} , dB(A)
at reference flow rate

Supply inlet	55
Supply outlet	64
Exhaust inlet	55
Exhaust outlet	64
Casing	45

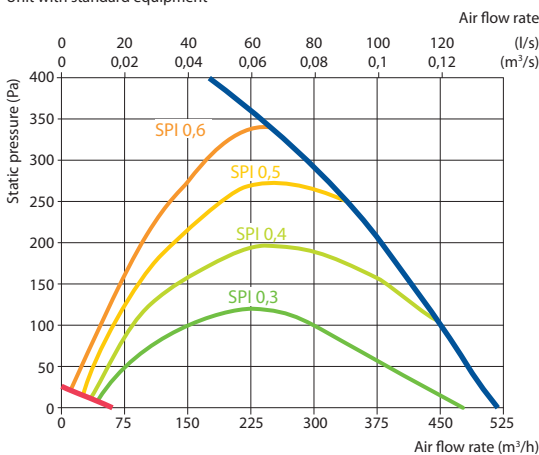
A-weighted sound pressure level L_{PA} , dB(A)

10 m² normally isolated room, distance from casing – 3 m.

Surroundings	33
--------------	----

Performance

Unit with standard equipment

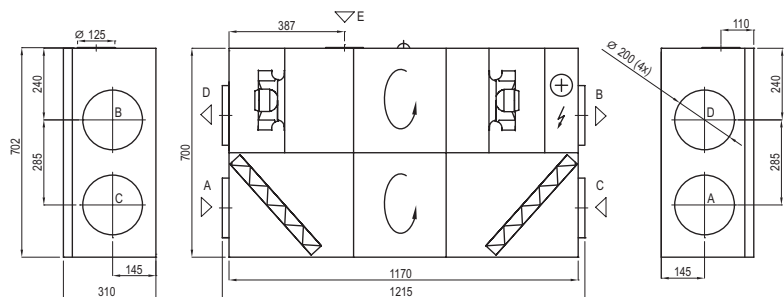


Temperature efficiency

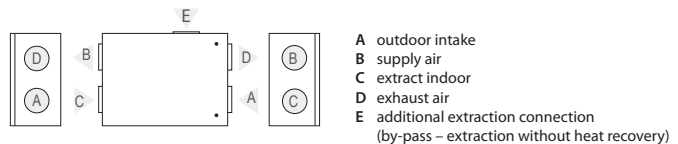
Outside temperature, °C	Winter					Summer		
	-23	-15	-10	-5	0	25	30	35
After heat exchanger, °C	13,9	15,3	16,2	17,1	18	22,5	23,4	24,3

indoor +22°C, 20 % RH

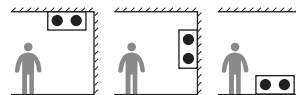
Shown as right (R1)



Shown as left (L1)



Mounting positions



Accessories

Closing damper	AGUJ-M-200+LF230/CM230
Silencer	A/D AGS-200-50-600-M
	B/C AGS-200-50-900-M
Water heater	DH-200
PPU	PPU-HW-3R-15-0,63-W2
2-way valve (heater)	VVP47.10-0,63

Water cooler	DCW-0,4-3
2-way valve (cooler)	VVP47.15-2,5
Outdoor grill	LD-200
Water heater-cooler	DHCW-200
DX cooler	DCF-0,4-3
Cooling unit	MOU-12HFN8+KA8140

